



TWH-101-W

Smart Heating Thermostat - WiFi

Saves up to 20% on energy consumption

KEY FEATURES

General:

- 24VAC power supply
- RF Wireless: 915mHZ
- 3.5" tft color touch screen with lockout option
- WiFi enabled / Modbus TCP(optional)
- Four or six events per day
- 7 day, weekday/weekend, 24hours schedule
- 12/24 hours
- Auto sync time and date
- Automatically adjusts to daylight saving time
- Energy consumption statics
- Temperature control range 5°C - 45°C (with C/F temperature display)
- History data tracking diagram(Up to 4 weeks)
- Defrost protection
- Work mode: Holiday, Home/Away, Boost(Hold)
- Multi language(4+ languages)

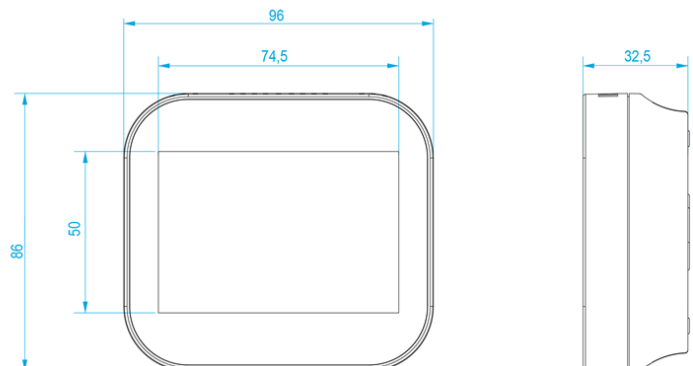
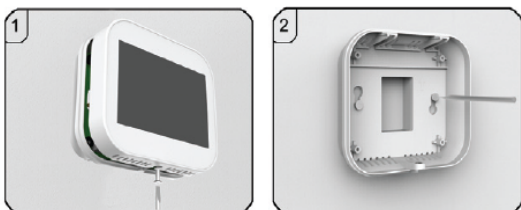
Sensors:

- Temperature & Humidity sensor
- Ambient light sensor



TECHNICAL DATA	
Purpose Of Control	Heating system
Supply Voltage	24vac VAC 50/60 HZ
Display	320x480 pixels TFT, Capacitive touch screen
Communications	WiFi
Displayed Temperature Resolution	0.1°C
Control Temperature Step	0.2°C(default = 0.5°C)
Smart Schedule Type	7days,weekday/weekend,24hours
Schedule Per Day	Up to seven different 4- or 6-event program
Standby Consumption	≤0.5 W
Wifi	IEEE 802.11 b/g/n - 2.4ghz
Security	WPA/WPA2
Operating Temperature	1° c- 85° C
Dimensions (W/H/D)	96 * 86 * 32.5 (mm)
Built-In Depth	24.5mm
Weight	≤200 g
Enclosure Rating	Ip 20
Enclosure Material	PC + ABS plastic
Alexa / Google Home (Optional)	Available
Approval	CE, FCC, RoHS,CA65
Warranty	2 Years

Installation:



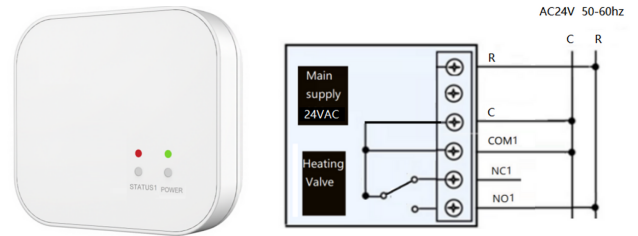
CONFIGURATION SETTINGS	
Language	English, Spanish, French, Portuguese
Date & time	01) Time zone 02) Date & time 03) Daylight saving time(DST)
Backlight	Ambient light diming
Standby Screen	Standby screen • Time: 3min, 10min, just night • Type: clock , default, off screen
Screen lock	4 number pin ,if your forget the password the Admin Password is sticked in the back of thermostat.
Network settings	• Wifi setup • Pair to app • Qr code • Mac address • Modbus Address(Optional)
Feature settings	01) Temperature format 02) Temperature limit 03) Switch differential 04) Output delay 05) Defrost: enable/disable 06) Built-in Sensor calibration 07) Humidity sensor calibration 08) Optimum start • Disable/Enable this feature 09) Energy tariff • Set Energy usage per Hour • Set unit cost per Kw/h 10) Open window function • Disable/Enable this feature 11) TemperatureBar Setting • Color Bar • White Bar 12) Fan settings: • Input
Schedule	• Weekday/weekend • 7 days • 24 hours • None
Hold temperature	• Hold time • Hold setpoint
System information	Version number, QR code
Reset to factory settings	Delete all settings to factory default configuration



01. Wifi Indicator	09. Holiday
02. History Data Diagram	10. Schedule
03. Adjusting The Optional Settings	11. Configuration Menu
04. Day Indicator & Clock	12. & 13. Adjusting the Setting Temperature
05. Home/Away	14. Setting Temp Display
06. Hold Function	15. Room Temperature Display
07. Humidity	16. °C or °F Display
08. Power ON / OFF	17. Heating Symbol

ACCESSORIES

TP -110- RT1

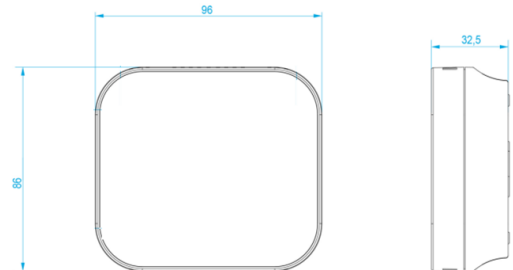


Wireless Receiver

General:

- AC24 power supply
- RF Wireless: 915MHz
- Single channel output
- Boiler/ radiator/electric heating

TECHNICAL DATA	
Purpose Of Control	Underfloor heating system
Supply Voltage	24vac VAC 50/60 HZ
Communications	Wireless RF 915MHz
Output Relay	5A
Operating Temperature	1° c- 85° C
Dimensions (W/H/D)	96 * 86 * 32.5 (mm)
Weight	≤200 g
Enclosure Rating	Ip 20
Enclosure Material	PC + ABS plastic



*All logos & trade marks represent the registered users only. All rights reserved.

*All product specifications on this brochure are subject to change without notice.



CANADA:
351 Ferrier Street Unit 5
Markham, Ontario L3R 5Z2
Tel: 416-410-6865
Toll Free: 1-866-843-6865

USA:
171 Cooper Ave.
Suite 110 Tonawanda,
NY 14150 USA
Tel: 1-716-877-7277
Toll Free: 1-866-843-6865

MIDDLE EAST:
PO Box No 126312
Office Suite 703 Oxford Tower
Business Bay Dubai, UAE
Tel: + 971 4 2767117

www.watchnetiot.com
info@watchnetiot.com

JULY 2023