



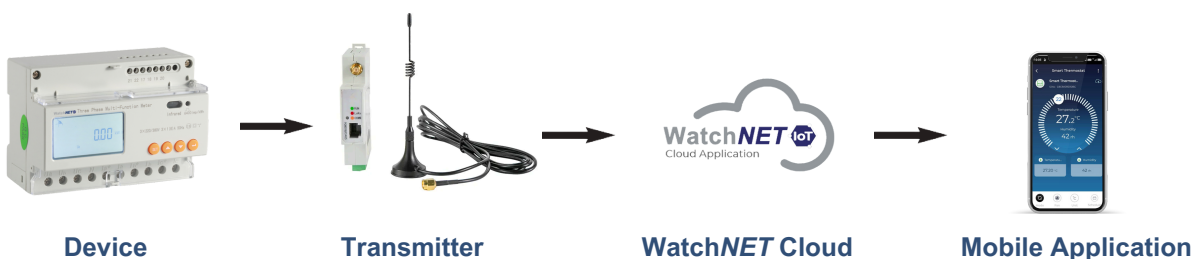
WLRE-GTW

RS485 TO WIFI TRANSMITTER

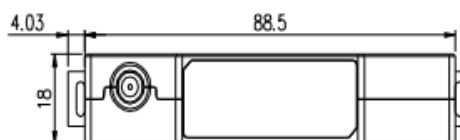
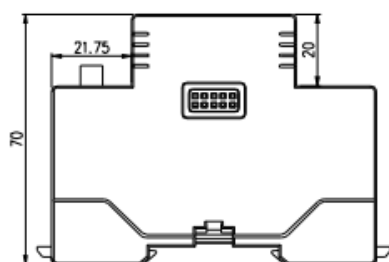
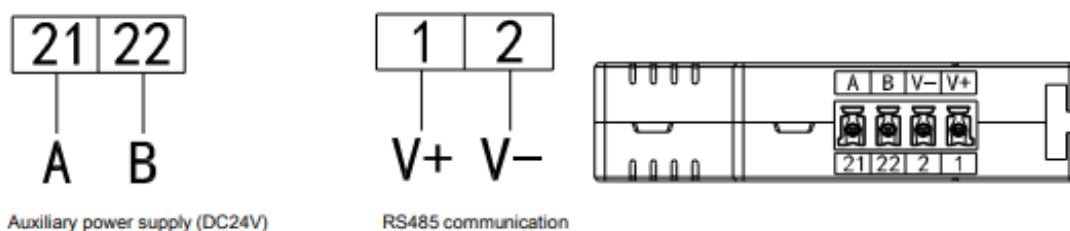
WLRE-GTW wireless communication terminal is a new wireless data acquisition device. The up link communication includes WiFi. The down link interface provides a standard RS485 data interface, which can easily connect power meters and RTUs, PLC, industrial computers and other equipment, only need to complete the initial configuration, you can complete the data acquisition of MODBUS equipment; at the same time WLRE-GTW series wireless communication terminal uses a powerful micro-processing chip, with built-in watchdog technology, reliable performance stable.

KEY FEATURES

- WIFI Communication, RS485 Interface
- TCP / IP protocol; Transparent transmission, MQTT
- Power Supply: DC24V
- 35mm Din Rail Easy Installation



SPECIFICATION	
Work	support 2.4G frequency band WiFi rate: 115200bps
Downlink	RS485 Communication
Uplink	WiFi wireless
Working current	Static power consumption: $\leq 1W$, transient power consumption: $\leq 3W$
Interface	50 Ω /SMA (Faucet)
Serial port type	RS-485 Communication
Baud rate	4800bps、9600bps、19200bps、38400bps (Default 9600bps)
Operating Voltage	DC24V
Operating temperature	-10°C~55°C
Storage temperature	-40°C~85°C
Humidity range	0~95% Non-condensing



*Actual signal range may vary depending on the environment.

*Battery life is determined by sensor reporting frequency and other variables.

*All logos & trade marks represent the registered users only. All rights reserved.

*All product specifications on this brochure are subject to change without notice.

CANADA
351 Ferrier St. Unit 5
Markham, Ontario L3R 5Z2
Tel. +1-416-410-6865
Toll Free: 1-866-843-6865

USA
417 Old Falls Blvd.
N. Tonawanda, NY 14120
Tel. +1-716-877-7277
Toll Free: 1-866-843-6865

MIDDLE EAST
PO Box No 126312
Suite 703 Oxford Tower
Business Bay, Dubai, UAE
Tel. + 971-4-2767117

www.watchnetiot.com
info@watchnetiot.com



May 2025